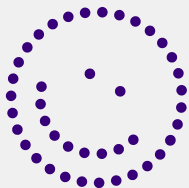
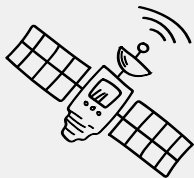


Launch guide



burst[®]

SONIC TOOTHBRUSH



Hamish & Brittany

Best friends & founders of BURST

3, 2, 1, 0... We have liftoff!

Greetings from Ground Control! Congratulations, your new oral care game is now officially out of this world! Thank you for putting your trust in us and all the BURST Ambassador Dental Professionals who have embraced and championed our growing company in such an extraordinary way. This incredible crew, which is like nothing our industry has ever seen, wants you to have the best oral hygiene possible (and have a helluva lot of fun while getting it). Sound good to you?

Perfect, because BURST is our baby, and we are obsessed with making high-quality, affordable oral care products available to everyone. While we may not be saving the world from asteroids headed for Earth, we're protecting humankind in another – equally important! – way. We're saving the world from overpriced oral care products. Oh, and making our moms proud. Hi, mom!

BURST® is a trademark of BURST.USA Inc.

BURST is run by a bunch of complete dental nerds who know how to party (even at space camp, obviously). But, while we may like to let our hair down, this sonic toothbrush is no joke. It's developed and offered in partnership with thousands of BURST Ambassador Dental Professionals who truly care about their patients. In fact, over 30,000 have joined our oral care movement in no time at all.

We think that's fantastic. Ready to see what all the fuss is about?

Brittany & Hamish

Best friends & founders of BURST

T-minus two minutes!

Hey there, cadet! I'm Bursty McBrush, the proud commander of this intergalactic, plaque-fighting, tooth-whitening craft. Thank you for putting your trust in me and my BURST Ambassador Dental Professional crew. Liftoff is imminent, so let's get you prepped and buckled before we engage the ground launch sequence!

To power up your brush

Wahoo, your brush comes fully charged! To engage the engine, just press the smiling face on your brush handle. It'll purr like a pair of cryogenic rocket thrusters.

.....

Three mission modes

Ready? Engage! Meet the three modes that'll help you accomplish your cleaning mission. To switch between them and find your favorite, hold the smiley button down when the brush is off. It will then cycle through the options. All you need to do is release on the one you want, and press the button again to start. Being a brainy brush, it will now remember that setting moving forward.

● Whitening

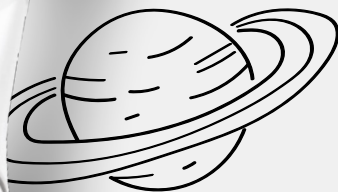
Our favorite mode, and the most powerful of the three. It'll tackle stains and whiten your smile, leaving your teeth looking brighter than Sirius* on a crystal clear night.

○ Sensitive

If your teeth and gums sometimes feel a little tender, our sensitive setting reduces the power yet still gives a thorough clean. It's so gentle it's like floating in the Zero Gravity chamber with nothing but your favorite onesie on.

⦿ Massage

Thanks to this mode, it's easy to pamper pearly whites, even while suspended in space. Who would have thought that unwinding from the day starts with your mouth?



Refuel my rocket!

Yes, this craft is a flasher (when it's low on charge).

No point pretending you can go into hyperdrive if you don't have batteries. Sorry, I mean cryogenic reactants. Anyways, when you're running low on charge (20% and below), the + sign on your handle will start to flash red. When it does, simply pop it back on your charger base and leave it overnight. Your beauty will be ready to launch when the red + sign disappears.

Your refueled orbiter fuel cells will take you to the moon and back.

*Sirius, also known as the Dog Star or Sirius A, is the brightest star in Earth's night sky. According to NASA, it has a mass that's two times that of Earth's sun!

Three small steps for man...
one giant leap for oral care!

Perfect brushing starts here

Step 1



45-degree angle

Start in one quadrant of your mouth
(e.g. top left or bottom right) and
place your BURST brush at
a 45-degree angle towards
your gumline.

Step 2



Slow down

Slowly move the brush from
tooth to tooth, making sure you
give each one a couple
seconds of TLC.



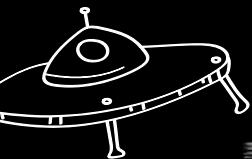
Step 3

Quadrant love

Clean each quadrant for 30
seconds; the nifty built-in timer
will pause briefly to remind
you to move on to the
next section.

Brittany Huffman
Registered Dental
Hygienist





A spacecraft packed with features



Bristles so soft, you'll want to snuggle up with them

Our bristles are a thing of beauty. Multi-length and interdental (be still our beating hearts), they can reach all those tricky nooks and craters where plaque loves to camp out, all while protecting your gums. BURST charcoal-black bristles are cut from a different cloth – rather than scratchy nylon, we use a material called PBT.

A handy two minute timer

Our buddies, the genius BURST Ambassador Dental Professionals, tell us that two minutes is the minimum amount of time you should spend brushing your teeth. No need to watch the countdown when you brush with BURST, thanks to the built-in timer that lets you know when two minutes are up! Oh, and if you ever need to pause, just press the smiley button once.

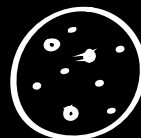
Never miss a tooth with our quad-interval technology

Do you tend to focus on one area of your mouth over another? Luckily, your brush is equipped with a special feature that makes it pause briefly every 30 seconds so you can move to a new section and every tooth can get that sweet, sweet lovin'.

Four week battery life

This shuttle is equipped with three RS-25 engines...sorry, that's my other spaceship. I mean a powerful lithium-ion battery! Even better, it's nothing like our phones which we have to charge EVERY night. With just one overnight charge, your baby will get about four weeks of cleaning time, brushing twice a day. MEOW!

To top it off, it's USB-ready. Our Founder, Chief Master Sergeant Hamish, is so proud of his oral care game that he connects his brush to his laptop when he's out and about. Yeah, he's cool like that.



Questions? We've got the answers

How do I start my replacement head subscription?

If you purchased a brush directly from our website, you're automatically enrolled! You can look forward to free shipping and a lifetime warranty while subscribed. If you purchased from one of our amazing partners or received it as a gift, then power up our website and sign up to either start your subscription and lifetime warranty or register your device for a one-year warranty.

What happens if I have a crash landing/break my toothbrush?

First, try to reset your brush with these simple steps:

- Step 1:** Sit the brush on the charger.
- Step 2:** Hold the power button for three seconds.
- Step 3:** The lights on the brush will flash to show it has been reset.

While our brush is virtually unbreakable, we know that meteor showers can hit unexpectedly. Good thing you stayed subscribed with us and have a lifetime warranty! Send a photo or video to ground control at hello@burstoralcare.com

How long will it take the brush to fully charge?

Your brush can take eight hours to go from dead to fully charged. This may seem long on Earth, but in Deep Space, that's nothing! When it's fully charged, the red light on the front will turn off.

Oh, and this one charge will last for up to one month!

How do I clean the brush?

Rinse after each use and dry the handle thoroughly. If extra care is needed, gently wash with soap and warm water or wipe down with a tiny bit of rubbing alcohol.

Should I use toothpaste with this brush?

Yes, it is advisable to use toothpaste while brushing for the best clean possible. You can use whatever kind you like, but BURST does have a cosmically fantastic array of pastes that are designed to work perfectly with your brush.

Should I leave the brush on the charger?

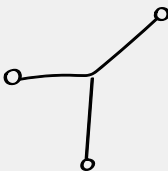
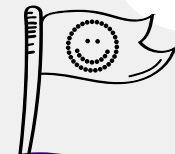
The BURST brush is all about space travel, so it doesn't have to live in the docking station. Feel free to charge it up and store the charger until next time. If you use the charger as a stand, be sure to unplug it to keep your brush working at optimum levels.

Does this brush come with a cover?

We do not currently offer a head cover. Why? Covers tend to hold moisture and encourage the growth of bacteria, like the stuff you'll find on the bottom of an alien's shoe. If you would like a home for your brush while you explore the galaxy, we highly recommend the BURST Travel Case.

How do I contact support?

Give us a shout at hello@burstoralcare.com One of our friendly crew members will reply.



The little brush that could

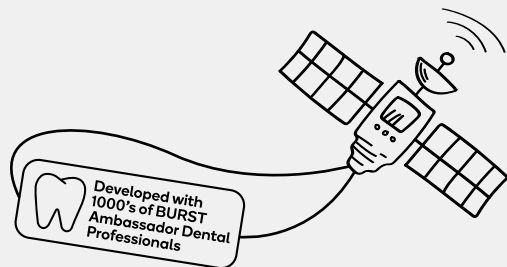
How we make all our products

With a love that spans time and space, coffee, and fairy dust. Well, maybe not so much of the last one, but definitely the first two.

It goes something like this...

Hamish and Brittany have a mind-melding experience. The light of a new oral care star rises. They brainstorm late into the night, snacking on freeze-dried space food...

After breakfast (and a much-needed nap), they share their ideas with the incredible team of BURST Ambassador Dental Professionals over in BURSTlabs. And this is where the magic happens. Literally thousands of brains go into hyperdrive. Our messaging platforms go berserk. Every tiny detail gets picked apart.



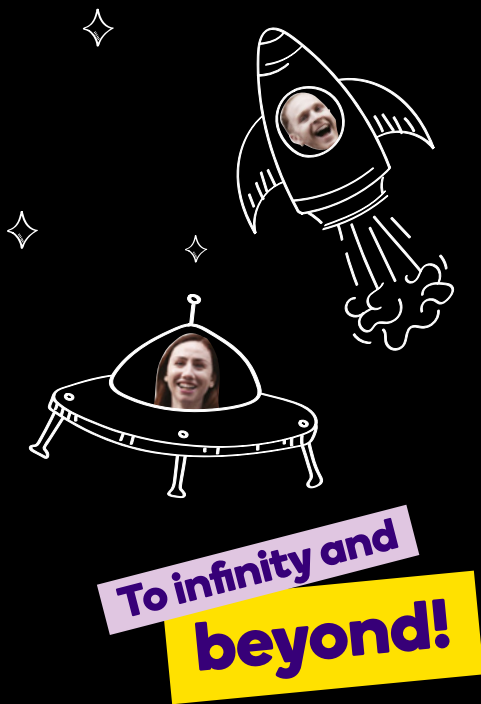
Then, after the experts have spoken, Hamish heads to the factories where he makes dreams come true. Tasks are set and lights flash as 3D printers whirl and spin. In time, prototypes are made. Hamish comes home exhausted but satisfied. These prototypes are then sent out to be tested by our network of BURST Ambassador Dental Professionals. Cue more berserk messaging with lots of 'ooing and aahing' (and coffee drinking).

The whole experience is wonderfully intense and, when all is said and done, amazing products emerge out of the madness. Each is a labor of love. They could not have any more professional input even if they tried. As you can see, it may be one long journey to a galaxy far away, but all that sharing and testing is so worth it.

Top of the cosmic line.

Enjoy!





Some random but important safety info

Our brush and its charger are close. Like, stuck in each other's elliptical orbit close. The BURST charger is the BURST brush's ride or die, so don't try to pair it with anything else!

Also, the charger is meant for a standard US 110V wall charging block. Be sure to store it in a cool, dry place.

If you do not have a standard US 110V wall charging block, we'd suggest charging using a USB port to ensure maximum safety.

Oh, and if any of your items become damaged/collide with an asteroid, let us know and we'll sort you out with a new one. Please don't use damaged items.

We have to say it: please remember that our toothbrush is designed to clean your teeth, tongue, and gums only. It is not a posh back scratcher or something to clean your keyboard with. Use our product only for its intended purpose!



Brush ready for retirement? Give it the send-off it deserves – dispose of the battery properly with help from burstoralcare.com/battery-disposal.

So what's next?

Ok, so we may not be literally going galactic, but we're sure going to aim for the stars when it comes to our new products. We will continue to expand our offering in order to provide total oral care solutions. We want your teeth to be treated like galactic royalty. With the help of our free-wheeling, forward-thinking team of BURST Ambassador Dental Professionals, we've got some incredible pieces of kit coming to you soon.

May the fun long continue...

Refreshment plan

The out-of-this-world BURST Ambassador Dental Professionals recommend replacing your brush head every 12 weeks so you stay fresh. Oh, and as long as you're subscribed to your replacement heads, we'll proudly offer a lifetime warranty on your device and will replace it free of charge. **SONIC BOOM!**

Visit burstoralcare.com/register to learn more.





Feel like chatting with your friendly galactic oral care enthusiasts?

Reach out to
hello@burstoralcare.com



.....
@f @BURSToralcare
#BURSToralcare
www.burstoralcare.com

BURST® is a registered
trademark of BURST.USA Inc.

BURST.USA Inc.
340 S. Lemon Avenue #4658,
Walnut, CA, 91789

